

**PLEASE CHECK WWW.MOLEX.COM FOR LATEST PART INFORMATION**

**Part Number:** [0510151100](#)  
**Status:** **Active**  
**Description:** 2.00mm (.079") Pitch Board-In Crimp Housing, Low Profile, 11 Circuits

**Documents:**

|  |  |
|--|--|
| <a href="#">3D Model</a>                                 | <a href="#">Product Specification PS-51015-002 (PDF)</a> |
| <a href="#">Drawing (PDF)</a>                            | <a href="#">RoHS Certificate of Compliance (PDF)</a>     |
| <a href="#">Product Specification PS-51015-001 (PDF)</a> |  |

**Agency Certification**

UL E29179

**General**

|                |                       |
|----------------|-----------------------|
| Product Family | Crimp Housings        |
| Series         | <a href="#">51015</a> |
| Product Name   | Board-In              |

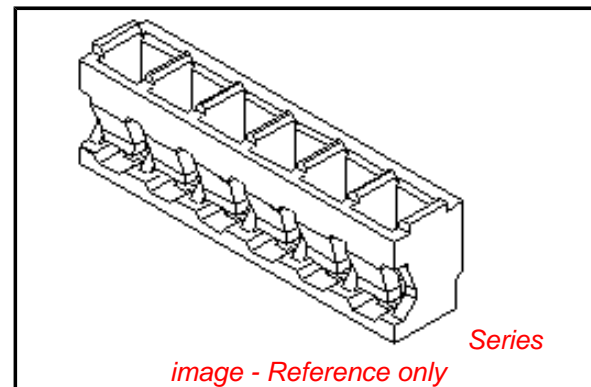
**Physical**

|                               |                 |
|-------------------------------|-----------------|
| Circuits (maximum)            | 11              |
| Color - Resin                 | Natural         |
| Flammability                  | 94V-0           |
| Gender                        | Male            |
| Glow-Wire Compliant           | No              |
| Material - Resin              | Nylon           |
| Number of Rows                | 1               |
| Packaging Type                | Bag             |
| Panel Mount                   | No              |
| Pitch - Mating Interface (in) | 0.079 In        |
| Pitch - Mating Interface (mm) | 2.00 mm         |
| Stackable                     | No              |
| Temperature Range - Operating | -40°C to +105°C |

**Material Info**

**Reference - Drawing Numbers**

|                       |  |
|-----------------------|--|
| Product Specification | PS-51015-001, PS-51015-002, RPS-51015-001, RPS-51015-003, RPS-51015-004, RPS-51015-006 |
| Sales Drawing         | SD-51015-**00  |



**EU RoHS**

**ELV and RoHS Compliant**  
**REACH SVHC Contains SVHC: No**  
**Halogen-Free Status**

**China RoHS**



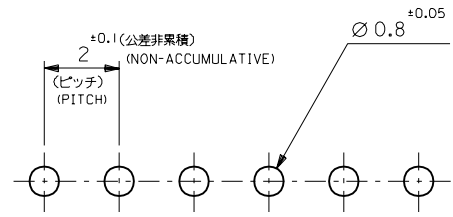
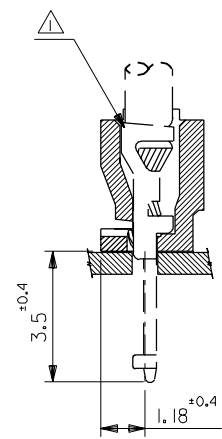
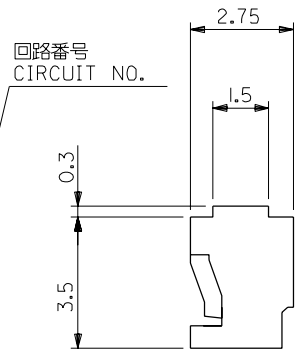
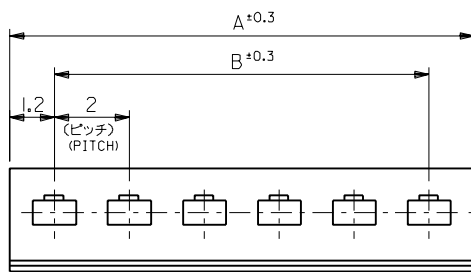
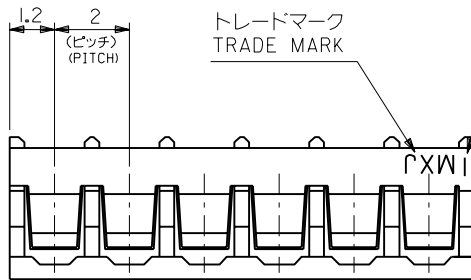
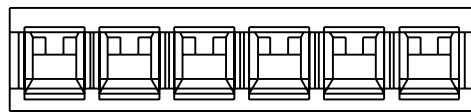
**Need more information on product environmental compliance?**

Email [productcompliance@molex.com](mailto:productcompliance@molex.com)  
 For a multiple part number RoHS Certificate of Compliance, [click here](#)

Please visit the [Contact Us](#) section for any non-product compliance questions.

**Search Parts in this Series**  
[51015Series](#)

**Use With**  
[50034](#)



基板取付穴推奨寸法

(基板厚: t=1~1.6mm)  
 RECOMMENDED PC BOARD HOLE DIMENSION  
 (THICKNESS: t=1~1.6mm)

注記 NOTE

△ 適合ターミナル: 50034-8\*00  
 APPLICABLE TERMINAL: 50034-8\*00

|    |      |            |               |
|----|------|------------|---------------|
| 28 | 30.4 | 51015-1500 | 15            |
| 26 | 28.4 | ↑ -1400    | 14            |
| 24 | 26.4 | -1300      | 13            |
| 22 | 24.4 | -1200      | 12            |
| 20 | 22.4 | -1100      | 11            |
| 18 | 20.4 | -1000      | 10            |
| 16 | 18.4 | -0900      | 9             |
| 14 | 16.4 | -0800      | 8             |
| 12 | 14.4 | -0700      | 7             |
| 10 | 12.4 | -0600      | 6             |
| 8  | 10.4 | -0500      | 5             |
| 6  | 8.4  | -0400      | 4             |
| 4  | 6.4  | ↓ -0300    | 3             |
| 2  | 4.4  | 51015-0200 | 2             |
| B  | A    | ENG.NO.    | 種数 NO. OF CKT |

|                      |                                     |
|----------------------|-------------------------------------|
| 材料 MATERIAL          | ナイロン66, UL94V-0<br>NYLON66, UL94V-0 |
| 仕上げ FINISH           | —                                   |
| 適用電線範囲 WIRE RANGE    | —                                   |
| 被覆外径 INS. RANGE      | —                                   |
| DRAWN BY             | '96/05/28 H.I.IJIMA                 |
| CHK'D BY             | '96/05/28 M.FUKUSHIMA               |
| APP'D BY             | '96/05/28 M.ENOMOTO                 |
| 尺度 SCALE             | 8 : 1                               |
| 角度 ANGLE             | ±3°                                 |
| 30以上 OVER            | ±0.3                                |
| 10以上 30未満 UNDER      | ±0.25                               |
| 10未満 UNDER           | ±0.2                                |
| 再作図 REDRAWN          | LC703101                            |
| 変更内容 REVISION RECORD |                                     |
| DR. CHK.             | DATE                                |

**molex** MOLEX-JAPAN CO.,LTD.  
 日本モレックス株式会社

REVISE ONLY ON CAD SYSTEM

TITLE 名称

2.0 BOARD  
 IN CONN. HSG.

DWG. NO. SD-51015-\*\*\*00

REV B